

Blackline Tunnel series (self closing)

Important : The wall around the hole should be completely flat/even



Size X is:

BT02 = 725 mm
BT03 = 1080 mm
BT04 = 1440 mm
BT05 = 1800 mm

Hole size always 1190 mm wide, height depends on the amount of inlets, see table above.



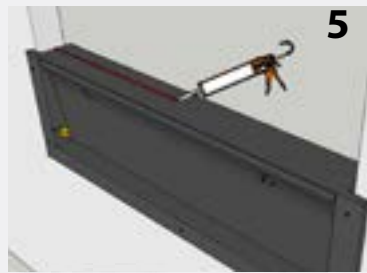
Optional: Mounting set - screws 5x60 with flat washer in wall plug 8



Put glue behind the flange of the first inlet - this is the bottom inlet



Mount bottom inlet into the hole with screws. Use pan head screw 5x60 with a flat washer



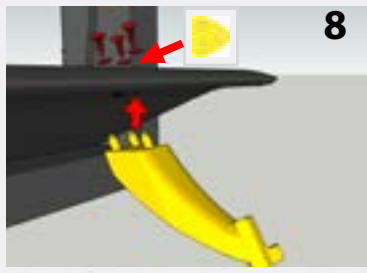
Put glue on top of the bottom inlet



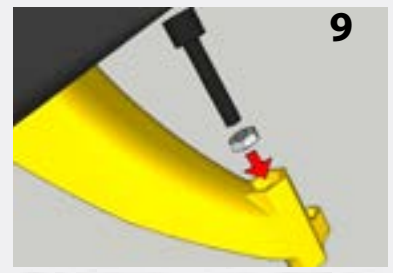
Repeat steps 3, 4 and 5 for next inlets till the hole is closed



2 sets per inlet supplied
use panhead screws 4,5x25



Screw ropeholder on the flap of the inlet with 3 screws



Place the fine tune screw and bolt



Connect all flaps with ropes, see detail



Assemble support and roller - 2 x



Mount 2 supports and connect ropes with cable clamp to a rod



For finetuning, open the flaps



Use finetuning screws to adjust every individual flap