



**TULDERHOF**  
a g r o s y s t e m s



## Winch engine TW 450

The TW-450 is the standard Tulderhof winch engine. This solid engine is equipped with a universal drum, which can be used with lifting belts and steel cables. The drum has a diameter of 50 mm. It has a maximum torque of 150 Nm.

The TW-450 has got 4 fastening points, which makes it easy to attach the engine to the wall. You don't need an extra support.

Because the engine is dust- and waterproof you can fasten it any way you want, also with the output shaft facing up.

Wiring is a standard accessory. The potentiometer and the limit switches are adjustable from the outside. You will never need to open the engine itself.

The potentiometer has a double bearing which extends the life and the reliability.

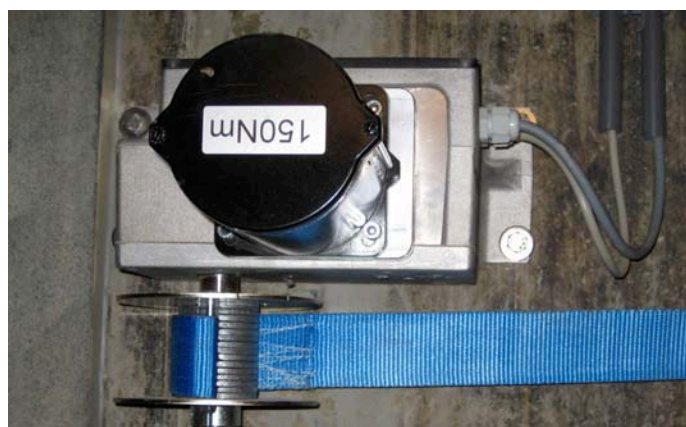
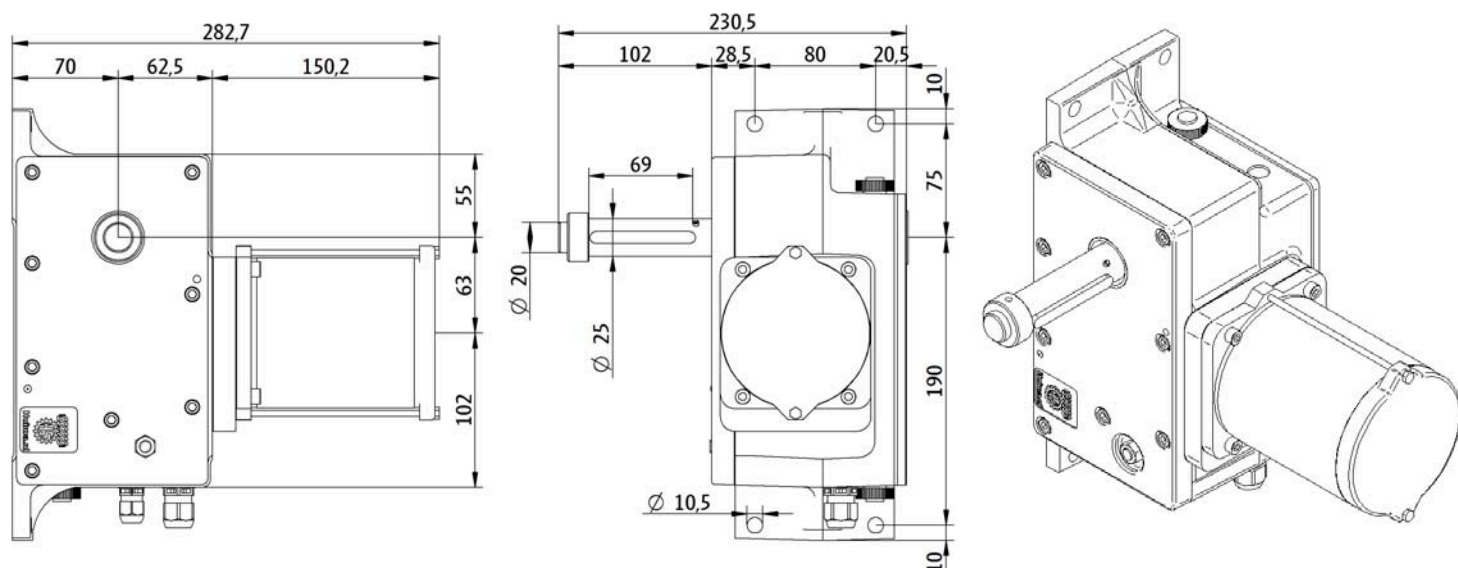
The electric motors have got a thermal overload protection. (clixon).

- ▶ Easy assembly
- ▶ Waterproof
- ▶ Solid
- ▶ Torque: 150 Nm
- ▶ Strong potentiometer
- ▶ Externally adjustable

# Technical information

TW-450 series			
Type	TW- 450-10K	TW- 450-5K	TW- 450-Z
M [Nm]	150	150	150
R [kΩ]	10	5	none
n [rpm]	1	1	1
P [kW]	0,05	0,05	0,05
U [V]	230	230	230
f [Hz]	50	50	50
I [A]	1	1	1
EB [R]	4	4	4
m [kg]	12	12	12

Note: These 3 engines are usually available from stock; other upon request.



Our own Tulderhof drum and 2 nylon winch belts are standard accessories for all TW-450 types. A nylon winch belt wears out less and is more reliable than a steel cable.



Goirleweg 13, 2382 Poppel - Belgium  
 Tel: +32 14 658 691 Fax: +32 14 659 960  
 Internet: [www.tulderhof.com](http://www.tulderhof.com)  
 Email: [info@tulderhof.com](mailto:info@tulderhof.com)